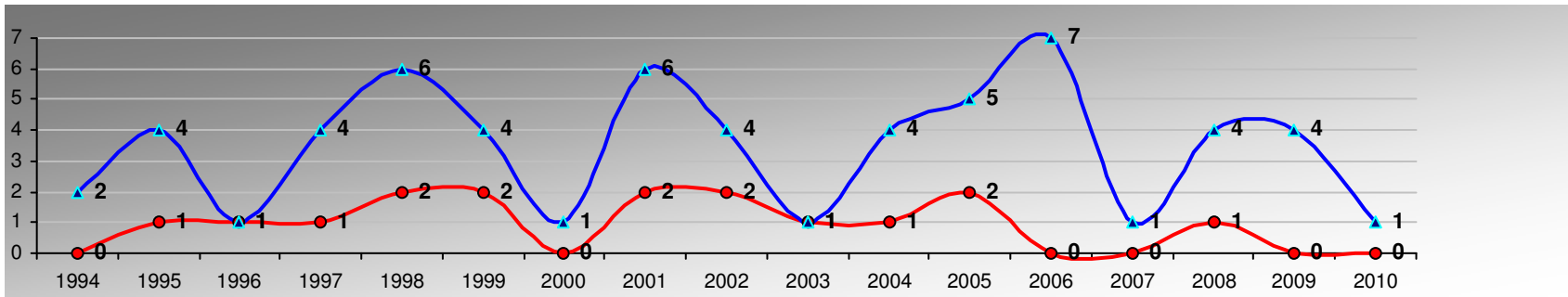
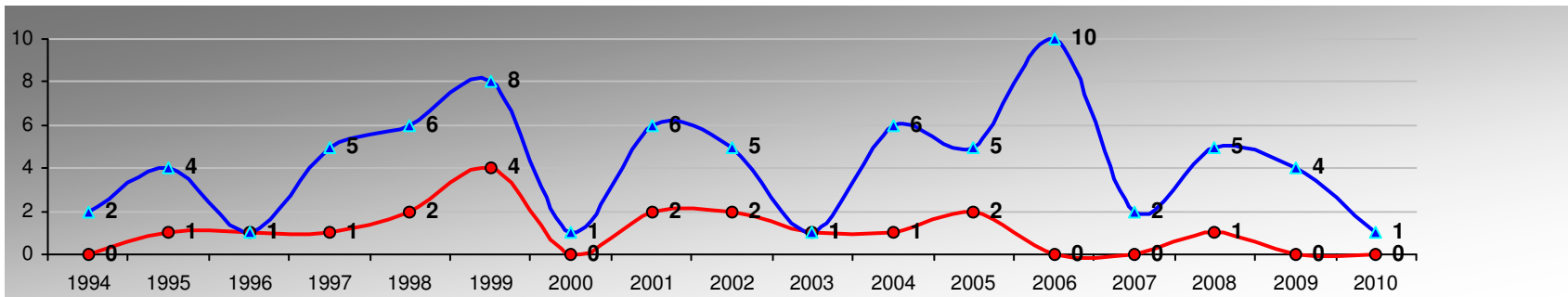


# DETAILED REPORT FOR SITE B6004/OXCLOSE LN/NOTTINGHAM

## TOTAL NUMBER OF COLLISIONS



## TOTAL NUMBER OF CASUALTIES



## SPEED AND TRAFFIC FLOW

YEAR	AVG SPEED	B5TH %	% ABOVE LIMIT	% 15 MPH +	TRAFFIC FLOW
2003	42.5	48	68	2	10004
2004	41	46	48	1.65	15314
2005	41	45	48.4	1.2	14839
2006	41	45.1	47.5	1.5	14474
2009	41.1	45	64.47	0.63	14232
2010	35.9	40.1	15.15	0.17	14682

## SITE INFORMATION

CAMERA TYPE	TIME-DIST
SITE LENGTH	0.9 KM
DATE INSTALLED	01/04/2008
OPS CASE PERIOD	01/01/2003 31/12/2005